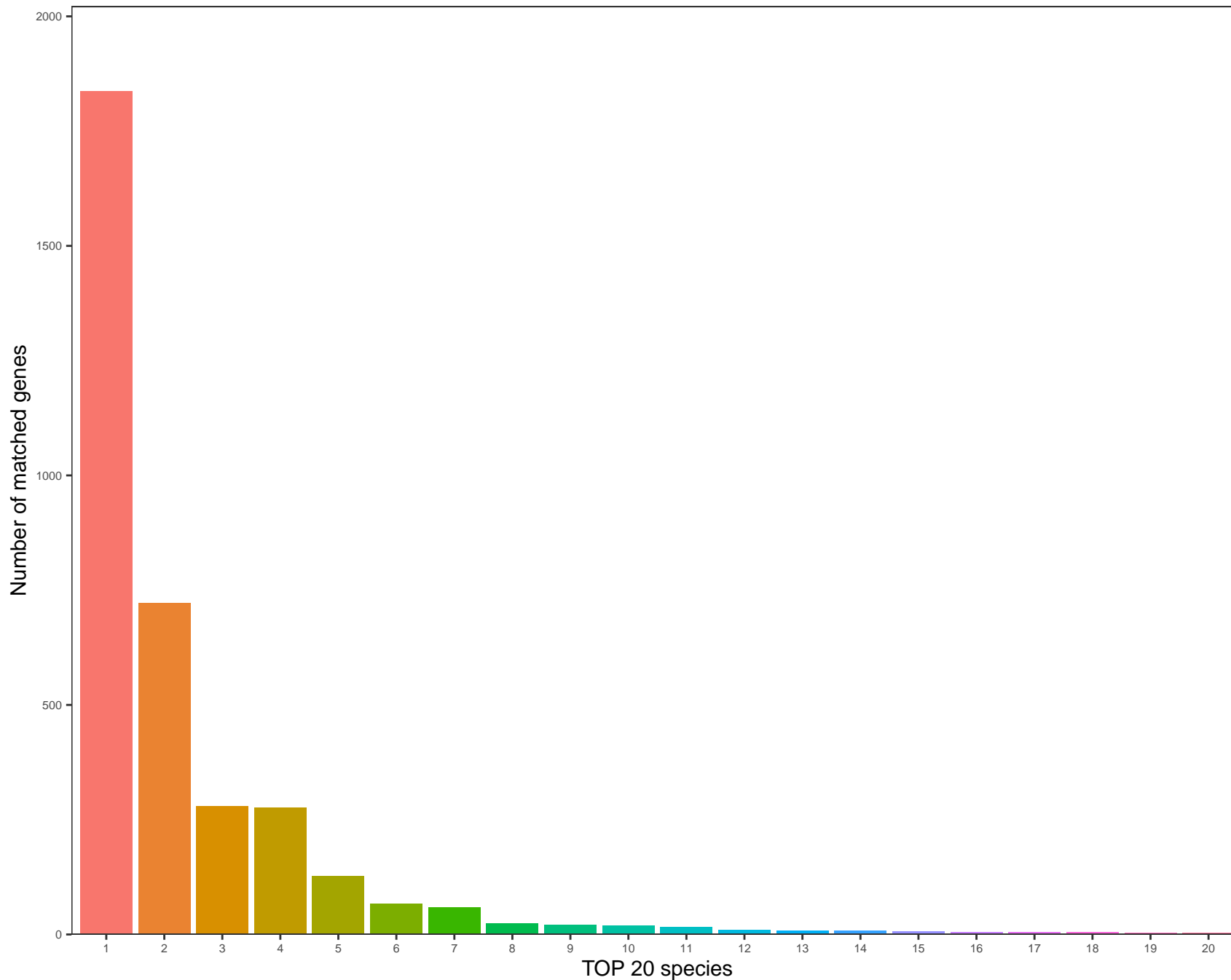


NR annotation



- Proteus mirabilis(1838)
- Proteus(723)
- Proteus mirabilis BB2000(279)
- Klebsiella pneumoniae(277)
- Proteus mirabilis HI4320(127)
- Proteus mirabilis ATCC 29906(67)
- Enterobacterales(59)
- Gammaproteobacteria(24)
- Proteus mirabilis WGLW4(21)
- Proteus vulgaris(19)
- Proteus mirabilis WGLW6(17)
- Proteus sp. HMSC14B05(10)
- Escherichia coli(9)
- Shigella sp. FC130(8)
- Morganellaceae(7)
- Klebsiella oxytoca(5)
- Shigella sp. FC1655(5)
- Acinetobacter baumannii(5)
- Salmonella enterica subsp. enterica(4)
- Proteus penneri ATCC 35198(4)